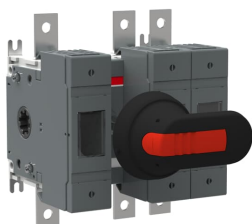


## PRODUCT-DETAILS

# OS160GB12P

## OS160GB12P SWITCH FUSE



### General Information

Extended Product Type	OS160GB12P
Product ID	1SCA115637R1001
EAN	6417019479750
Catalog Description	OS160GB12P SWITCH FUSE
Long Description	Switch Fuses,Front Operated,3-pole,12 (Between the Poles),British Standard,A2-A4,Handle and shaft included,

### Circular Value

Conflict Minerals Reporting Template (CMRT)	9AKK108467A5658
REACH Declaration	1SCC011021D0201
RoHS Information	1SCC011020D0201
SCIP	7e4d4f73-2902-4435-b930-c487f22a81df Finland (FI)

### Ordering

Minimum Order Quantity	1 piece
Customs Tariff Number	85365080

Country of Origin	Finland (FI)
-------------------	--------------

## Popular Downloads

Data Sheet, Technical Information	1SCC311013C0201
Instructions and Manuals	1SCC311037M0206

## Dimensions

Product Net Width	147 mm
Product Net Height	140 mm
Product Net Depth / Length	115 mm
Product Net Weight	1.6 kg

## Technical

Rated Operational Current AC-21A ( $I_g$ )	(500 V) 160 A (690 V) 160 A
Rated Operational Current AC-22A ( $I_g$ )	(500 V) 160 A (690 V) 160 A
Rated Operational Current AC-23A ( $I_g$ )	(500 V) 160 A (690 V) 160 A
Rated Operational Power AC-23A ( $P_g$ )	(220 ... 240 V) 45 kW (400 V) 75 kW (415 V) 75 kW (500 V) 90 kW (690 V) 132 kW
Conventional Free-air Thermal Current ( $I_{th}$ )	$\Theta = 40\text{ °C}$ 160 A
Conventional Thermal Current ( $I_{the}$ )	Fully Enclosed 160 A
Rated Impulse Withstand Voltage ( $U_{imp}$ )	8 kV
Rated Insulation Voltage ( $U_i$ )	1000 V
Rated Operational Voltage	Main Circuit 690 V AC
Rated Short-time Withstand Current Low Voltage ( $I_{cw}$ )	for 1 s 5 kiloampere rms
Rated Conditional Short- Circuit Current ( $I_{nc}$ )	(690 V) 80 kA
Power Loss	at Rated Operating Conditions per Pole 12 W
Pollution Degree	3
Handle Type	Pistol handle and shaft included
Switches Operating Mechanism	12 (Between the Poles)
Position of Line Terminals	Top In - Bottom Out, Bottom In - Top Out
Fuse Size	A2-A4

Fuse System	British Standard
Operating Mode	Front Operated
Standards	IEC 60947-3
Mounting Type	Base mounting
Number of Poles	3
Cable Cross-Section	2.5 ... 25 mm <sup>2</sup>
Terminal Type	Lug terminals
Terminal Width	20 mm
Tightening Torque	15 ... 22 N·m
Rated Current ( $I_n$ )	Main Circuit 160 A

## Technical UL/CSA

Tightening Torque	15 ... 22 N·m
-------------------	---------------

## Environmental

RoHS Status	Following EU Directive 2011/65/EU and Amendment 2015/863 July 22, 2019
-------------	--

## Certificates and Declarations (Document Number)

CCC Certificate	CCC OS100-160G_ 2015.pdf
Declaration of Conformity - CE	1SCC311137D2703
DNV GL Certificate	1SCC311125D0203
EAC Certificate	EAC OT_OTDC_OTL_OTP_OTR_OTU_OTE_OETL_OESA_OESC_OTM_OS_OSM_ .pdf
Instructions and Manuals	1SCC311037M0206
REACH Declaration	1SCC011021D0201
RoHS Information	1SCC011020D0201

## Container Information

Package Level 1 Units	box 1 piece
Package Level 1 Width	170 mm 6.7 in
Package Level 1 Depth / Length	220 mm 8.7 in
Package Level 1 Height	150 mm 5.9 in
Package Level 1 Gross Weight	2.2 kg 4.9 lb
Package Level 1 EAN	6417019479750

## Classifications

Object Classification Code		Q
ETIM 4	EC001040 - Fuse switch disconnecter	
ETIM 5	EC001040 - Fuse switch disconnecter	
ETIM 6	EC001040 - Fuse switch disconnecter	
ETIM 7	EC001040 - Fuse switch disconnecter	
ETIM 8	EC001040 - Fuse switch disconnecter	
ETIM 9	EC001040 - Fuse switch disconnecter	
eClass	V11.1 : 27371401	
WEEE Category	5. Small Equipment (No External Dimension More Than 50 cm)	

Categories

Low Voltage Products and Systems → Switches → Switch Fuses

