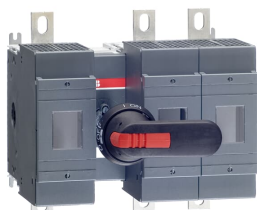


## PRODUCT-DETAILS

# OS400B12P

## OS400B12P SWITCH FUSE



### General Information

Extended Product Type	OS400B12P
Product ID	1SCA022753R3470
EAN	6417019244976
Catalog Description	OS400B12P SWITCH FUSE
Long Description	Switch Fuses,Front Operated,3-pole,12 (Between the Poles),British Standard,B1-B4,Handle and shaft included,

### Circular Value

Conflict Minerals Reporting Template (CMRT)	9AKK108467A5658
REACH Declaration	1SCC011021D0201
RoHS Information	1SCC011020D0201

### Ordering

Minimum Order Quantity	1 piece
Customs Tariff Number	85365080
Country of Origin	Finland (FI)

## Popular Downloads

Data Sheet, Technical Information	1SCC311013C0201
Instructions and Manuals	1SCC311015M0215

## Dimensions

Product Net Width	255 mm
Product Net Height	230 mm
Product Net Depth / Length	176 mm
Product Net Weight	6.7 kg 14.77 lb

## Technical

Rated Operational Current AC-21A ( $I_e$ )	(500 V) 400 A (690 V) 400 A
Rated Operational Current AC-22A ( $I_e$ )	(380 ... 415 V) 400 A (500 V) 400 A (690 V) 400 A
Rated Operational Current AC-23A ( $I_e$ )	(380 ... 415 V) 400 A (500 V) 400 A (690 V) 400 A
Rated Operational Power AC-23A ( $P_e$ )	(220 ... 240 V) 132 kW (400 V) 220 kW (415 V) 230 kW (500 V) 280 kW (690 V) 400 kW
Conventional Free-air Thermal Current ( $I_{th}$ )	$\Theta = 40^\circ\text{C}$ 400 A
Conventional Thermal Current ( $I_{the}$ )	Fully Enclosed 400 A
Rated Impulse Withstand Voltage ( $U_{imp}$ )	12 kV
Rated Insulation Voltage ( $U_i$ )	1000 V
Rated Operational Voltage	Main Circuit 690 V AC
Rated Short-time Withstand Current Low Voltage ( $I_{cw}$ )	for 1 s 14 kiloampere rms
Rated Conditional Short- Circuit Current ( $I_{nc}$ )	(690 V) 80 kA
Power Loss	at Rated Operating Conditions per Pole 45 W
Pollution Degree	3
Handle Type	Pistol handle and shaft included
Switches Operating Mechanism	12 (Between the Poles)
Position of Line Terminals	Top In - Bottom Out, Bottom In - Top Out
Fuse Size	B1-B4
Fuse System	British Standard
Operating Mode	Front Operated
Standards	IEC 60947-3
Mounting Type	Base mounting
Number of Poles	3
Terminal Type	Lug terminals
Terminal Width	25 mm

Tightening Torque	30 ... 44 N·m
Rated Current (I <sub>n</sub> )	Main Circuit 400 A

## Technical UL/CSA

Tightening Torque	30 ... 44 N·m
-------------------	---------------

## Environmental

RoHS Status	Following EU Directive 2011/65/EU and Amendment 2015/863 July 22, 2019
-------------	--

## Certificates and Declarations (Document Number)

CCC Certificate	CCC OS315-400 2016
Declaration of Conformity - CE	1SCC311099D2704
DNV GL Certificate	1SCC311131D0202
EAC Certificate	EAC OT_OTDC_OTL_OTP_OTR_OTU_OTE_OETL_OESA_OESC_OTM_OS_OS M_.pdf
Instructions and Manuals	1SCC311015M0215
REACH Declaration	1SCC011021D0201
RoHS Information	1SCC011020D0201

## Container Information

Package Level 1 Units	box 1 piece
Package Level 1 Width	240 mm 9.45 in
Package Level 1 Depth / Length	270 mm 10.63 in
Package Level 1 Height	206 mm 8.11 in
Package Level 1 Gross Weight	7.1 kg 15.65 lb
Package Level 1 EAN	6417019244976

## Classifications

Object Classification Code	Q
ETIM 4	EC001040 - Fuse switch disconnecter
ETIM 5	EC001040 - Fuse switch disconnecter
ETIM 6	EC001040 - Fuse switch disconnecter
ETIM 7	EC001040 - Fuse switch disconnecter
ETIM 8	EC001040 - Fuse switch disconnecter
ETIM 9	EC001040 - Fuse switch disconnecter
UNSPSC	39122233
IDEA Granular Category Code (IGCC)	5291 >> Fuse switch disconnecter
eClass	V11.1 : 27371401
WEEE Category	5. Small Equipment (No External Dimension More Than 50 cm)

---

## Categories

---

Low Voltage Products and Systems → Switches → Switch Fuses

