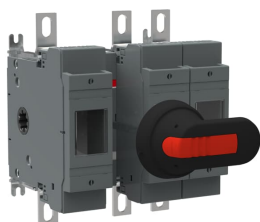


PRODUCT-DETAILS

OS200B12P

OS200B12P SWITCH FUSE



General Information

Extended Product Type	OS200B12P
Product ID	1SCA022721R3210
EAN	6417019231723
Catalog Description	OS200B12P SWITCH FUSE
Long Description	Switch Fuses,Front Operated,3-pole,12 (Between the Poles),British Standard,B1-B2,Handle and shaft included,

Circular Value

Conflict Minerals Reporting Template (CMRT)	9AKK108467A5658
REACH Declaration	1SCC011021D0201
RoHS Information	1SCC011020D0201
SCIP	09e23cbb-a792-40e2-9759-84b5c7b2411c Finland (FI)

Ordering

Minimum Order Quantity	1 piece
Customs Tariff Number	85365080

Country of Origin	Finland (FI)
-------------------	--------------

Popular Downloads

Data Sheet, Technical Information	1SCC311013C0201
Instructions and Manuals	1SCC311012M0219

Dimensions

Product Net Width	177 mm
Product Net Height	199 mm
Product Net Depth / Length	130 mm
Product Net Weight	2.8 kg 6.3 lb

Technical

Rated Operational Current AC-21A (I_e)	(500 V) 200 A (690 V) 200 A
Rated Operational Current AC-22A (I_e)	(380 ... 415 V) 200 A (500 V) 200 A (690 V) 200 A
Rated Operational Current AC-23A (I_e)	(380 ... 415 V) 200 A (500 V) 200 A (690 V) 200 A
Rated Operational Power AC-23A (P_e)	(220 ... 240 V) 60 kW (400 V) 110 kW (415 V) 110 kW (500 V) 132 kW (690 V) 200 kW
Conventional Free-air Thermal Current (I_{th})	$\Theta = 40\text{ °C}$ 200 A
Conventional Thermal Current (I_{the})	Fully Enclosed 200 A
Rated Impulse Withstand Voltage (U_{imp})	12 kV
Rated Insulation Voltage (U_i)	1000 V
Rated Operational Voltage	Main Circuit 690 V AC
Rated Short-time Withstand Current Low Voltage (I_{cw})	for 1 s 8 kiloampere rms
Rated Conditional Short- Circuit Current (I_{nc})	(690 V) 80 kA
Power Loss	at Rated Operating Conditions per Pole 17 W
Pollution Degree	3
Handle Type	Pistol handle and shaft included
Switches Operating Mechanism	12 (Between the Poles)

Position of Line Terminals	Top In - Bottom Out, Bottom In - Top Out
Fuse Size	B1-B2
Fuse System	British Standard
Operating Mode	Front Operated
Standards	IEC 60947-3
Mounting Type	Base mounting
Number of Poles	3
Terminal Type	Lug terminals
Terminal Width	20 mm
Tightening Torque	15 ... 22 N·m
Rated Current (I_n)	Main Circuit 200 A

Technical UL/CSA

Tightening Torque	15 ... 22 N·m
-------------------	---------------

Environmental

RoHS Status	Following EU Directive 2011/65/EU and Amendment 2015/863 July 22, 2019
-------------	--

Certificates and Declarations (Document Number)

CCC Certificate	CCC OS200-250 2016
Declaration of Conformity - CE	1SCC311091D2704
DNV GL Certificate	1SCC311123D0203
EAC Certificate	EAC OT_OTDC_OTL_OTP_OTR_OTU_OTE_OETL_OESA_OESC_OTM_OS_OSM_ .pdf
Instructions and Manuals	1SCC311012M0219
REACH Declaration	1SCC011021D0201
RoHS Information	1SCC011020D0201

Container Information

Package Level 1 Units	box 1 piece
Package Level 1 Width	230 mm 9.1 in
Package Level 1 Depth / Length	270 mm 10.6 in
Package Level 1 Height	170 mm 6.7 in
Package Level 1 Gross Weight	3.1 kg 6.9 lb
Package Level 1 EAN	6417019231723

Classifications		
Object Classification Code		Q
ETIM 4	EC001040 - Fuse switch disconnecter	
ETIM 5	EC001040 - Fuse switch disconnecter	
ETIM 6	EC001040 - Fuse switch disconnecter	
ETIM 7	EC001040 - Fuse switch disconnecter	
ETIM 8	EC001040 - Fuse switch disconnecter	
ETIM 9	EC001040 - Fuse switch disconnecter	
eClass	V11.1 : 27371401	
WEEE Category	5. Small Equipment (No External Dimension More Than 50 cm)	

Categories

Low Voltage Products and Systems → Switches → Switch Fuses

