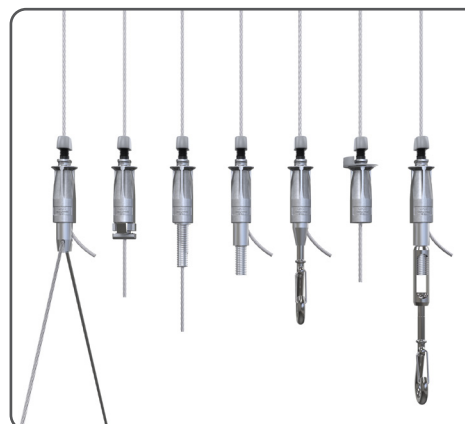


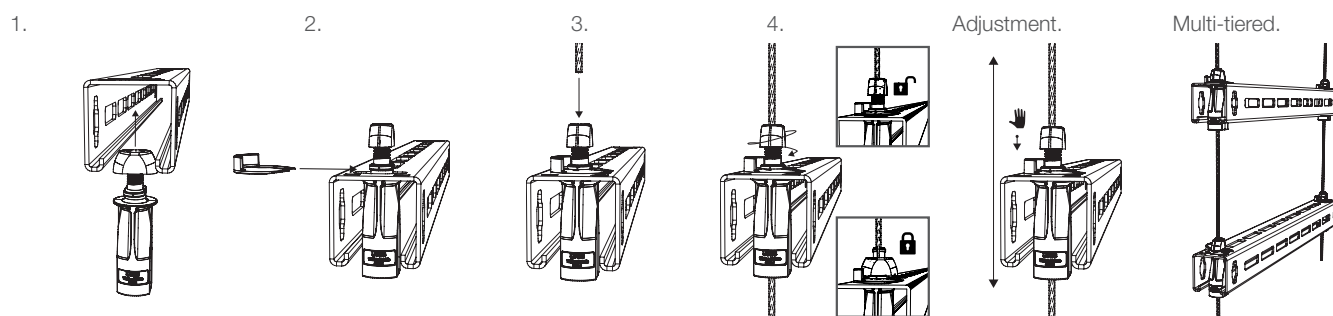
The next generation of wire rope suspension products designed for the fast suspension of cable containment, pipework, ductwork, HVAC systems and modules including multi-tier installations.

FEATURES / BENEFITS

- **Quick** – up to 6 times faster than traditional suspension systems
- **Safe** – can be pre-installed to channel using pre-fitted washer/nut or using retention clip, reducing time working at height
- **Easy** – integral ergonomically designed release button allows for simple adjustment
- **Secure** – button acts as a locking screw and indicator clearly highlights the wire is locked in position for ultimate security
- **Versatile** – variety of foot attachments available to suit applications
- **Strong** – highest load rating capability to date; up to 250 kg with 5:1 SWL

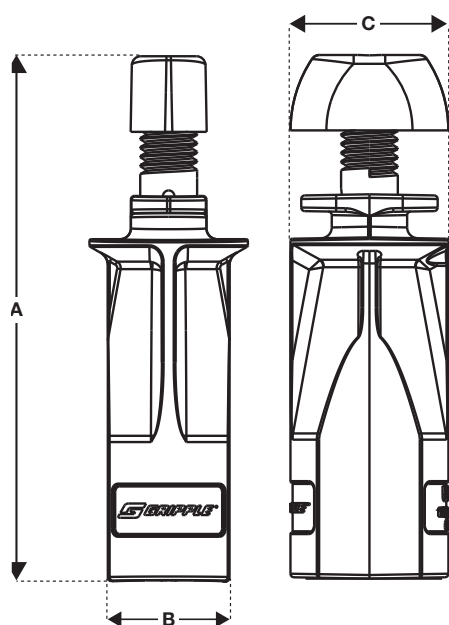


INSTALLATION & ADJUSTMENT



Maximum off axis suspension = 15° (unless otherwise specified by Gripple Technical Services)
NOTE: UniGrip No.4 safety factor reduces to 3:1 when installed to 15° off axis

SPECIFICATION



No. 2	Dimension	A	B	C
	mm	55	17	20

No. 3	Dimension	A	B	C
	mm	73	17	22

No. 4	Dimension	A	B	C
	mm	115 *	22	30

*Includes 25 mm M12 thread

AVAILABLE END FIXINGS



For more options on available end fixings please contact us or visit www.gripple.com

SUBMITTAL INFORMATION

Load Rating:

No. 2 - 55 kg @ 5:1
No. 3 - 110 kg @ 5:1
No. 4 - 250 kg @ 5:1

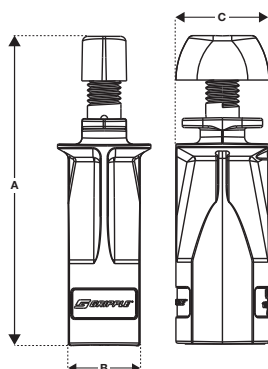
Material:

Housing - Type ZA2 Zinc
Carriage - Acetal Copolymer
Wedge - Sintered steel hardened to min. 56 Rockwell C
Button - Acetal Copolymer

UniGrip – Standard



SPECIFICATION

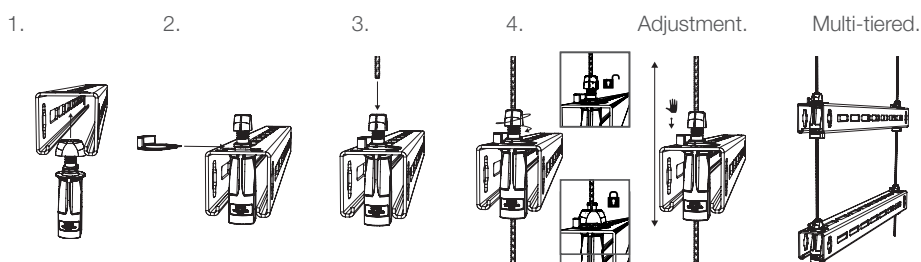


No. 2	Dimension	A	B	C
	mm	55	17	20
No. 3	Dimension	A	B	C
	mm	73	17	22
Foot Material		End Cap – PP (Polypropylene)		
Clip Material		Retention Clip – PP (Polypropylene)		

OVERVIEW

- Designed for non-mechanical fixing through brackets
- Supplied with retention clip for pre-fabrication applications
- Central wire exit

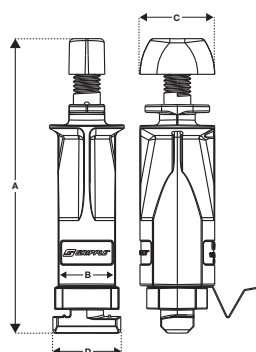
INSTALLATION



UniGrip – QT



SPECIFICATION

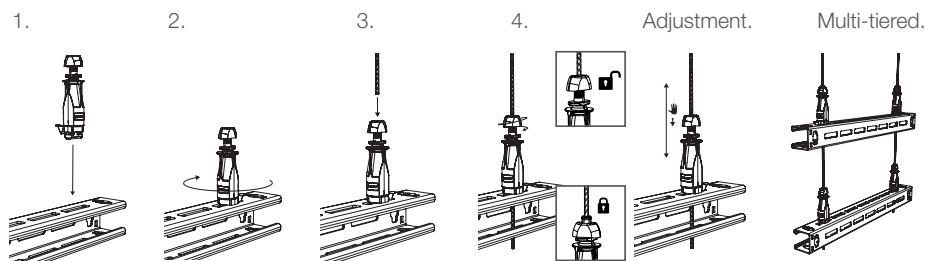


No. 2	Dimension	A	B	C	D
	mm	71	17	20	20
No. 3	Dimension	A	B	C	D
	mm	89	17	22	20
Foot Material		QT (Quick Twist) Adaptor – Zinc Alloy (EN12844 ZP2) Spring Clip – Stainless Spring Steel BS5770 301 S21			

OVERVIEW

- Designed for use with Grippler Universal Brackets
- Quarter turn installation, no mechanical fix required
- Safety clip for added security
- Central wire exit

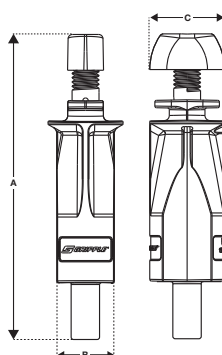
INSTALLATION



UniGrip – Central Exit



SPECIFICATION

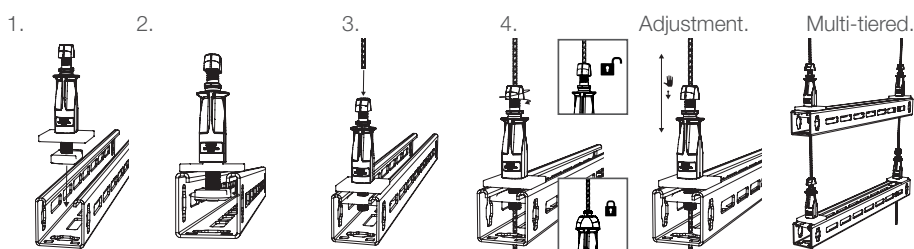


No. 2	Dimension	A	B	C
	mm	81	17	20
No. 3	Dimension	A	B	C
	mm	99	17	22
No. 4	Dimension	A	B	C
	mm	115	22	30
Foot Material	Thread – Mild Steel (Type EN1A) - Bright Zinc Plated			

OVERVIEW

- Designed for services suspended with channel
- Supplied with either a square washer and channel nut or hex nut
- 25 mm male thread for mechanical fixing
- Thread sizes - M8 (UniGrip No. 2), M10 (UniGrip No. 3) and M12 (UniGrip No. 4)
- Central wire exit

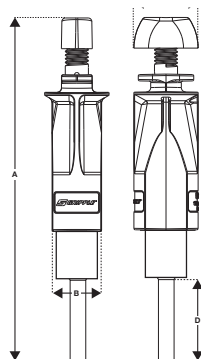
INSTALLATION



UniGrip – Side Exit



SPECIFICATION

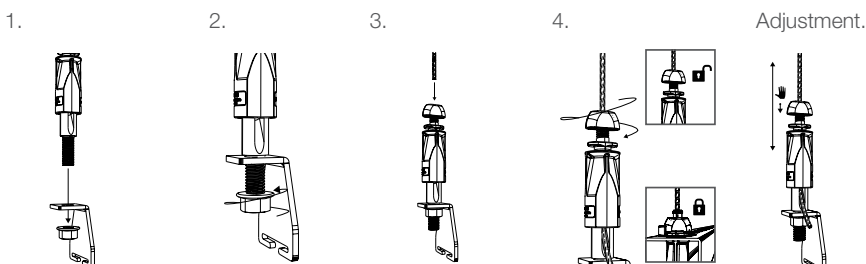


No. 2	Dimension	A (M6)	A (M8)	B	C	D (M6)	D (M8)
	mm	93	98	17	20	20	25
No. 3	Dimension	A (M6)	A (M8)	B	C	D (M6)	D (M8)
	mm	111	116	17	22	30	35
Foot Material	Thread – Mild Steel (Type EN1A) - Bright Zinc Plated						

OVERVIEW

- Designed for applications in which wire cannot exit centrally (avoiding clashes with services)
- Supplied with a hex nut
- Side wire exit

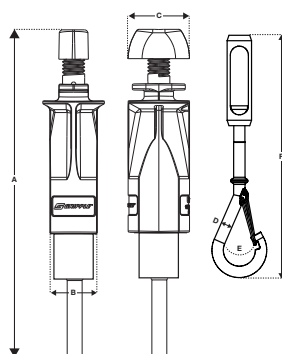
INSTALLATION



UniGrip – Calibra



SPECIFICATION



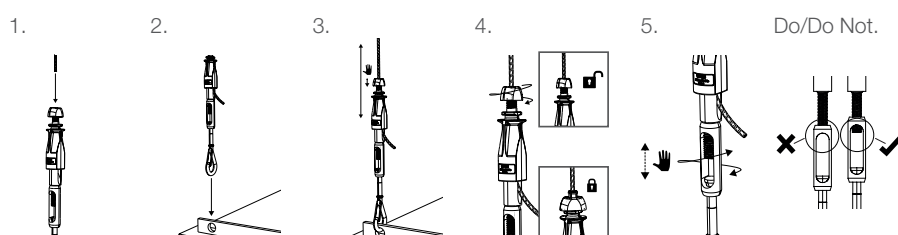
No. 2	Dimension	A	B	C	D	E	F
	mm	55	17	20	7	8	134

Foot Material	Wire	Mild Steel (Type EN1A) - Bright Zinc Plated
	Turnbuckle	Mild Steel (Type EN1A) - Bright Zinc Plated
	Crimped Pin	Mild Steel (Type EN1A) - Bright Zinc Plated
	Snap Hook	Mild Steel (Type EN1A) - Bright Zinc Plated

OVERVIEW

- Designed for adjustment of building services under load
- 35 mm of finite adjustment using integral adjustment pillar and M8 thread
- Side wire exit

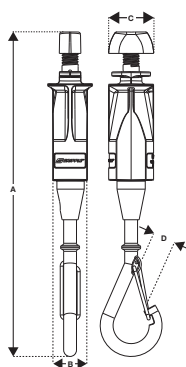
INSTALLATION



UniGrip – Hook



SPECIFICATION



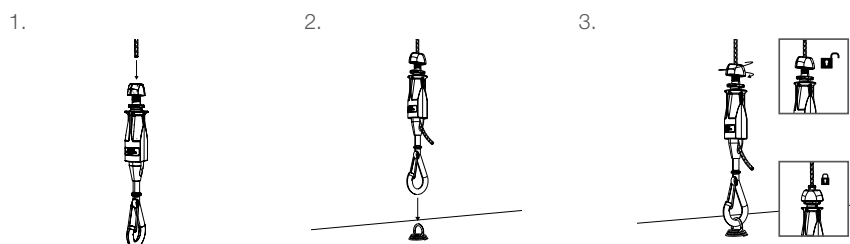
No. 2	Dimension	A	B	C	D
	mm	141	17	20	7

Hook Adaptor – Mild Steel (Type EN1A) - Bright Zinc Plated

OVERVIEW

- Self closing latch for security
- Designed for heating/cooling panels and light fittings
- Side wire exit

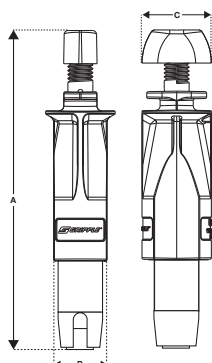
INSTALLATION



UniGrip – Y-Fit



SPECIFICATION



No. 2	Dimension	A	B	C
	mm	80	17	20

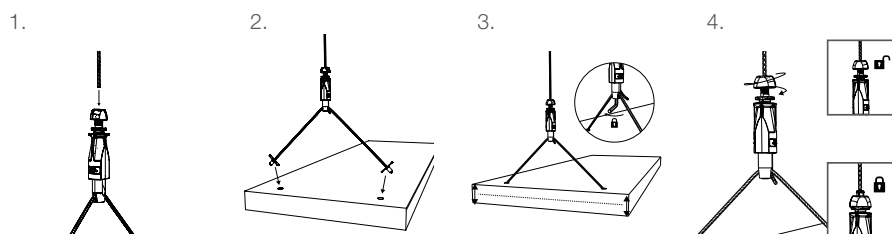
No. 3	Dimension	A	B	C
	mm	96	17	22

Foot	Y-Fit Adaptor – Mild Steel (Type EN1A) - Bright Zinc Plated
Material	Grub Screw – Mild Steel (Type EN1A) - Bright Zinc Plated

OVERVIEW

- Designed for lighting or containment
- Dual fixing points for balance
- 150 mm, 300 mm and 500 mm leg lengths as standard
- Legs available with a variety of wire end fixings eg. Toggle, Snap Hook etc.
- Side wire exit

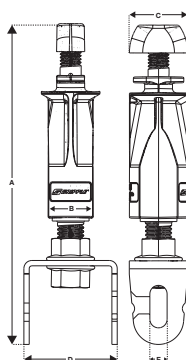
INSTALLATION



UniGrip – Cable Basket Adaptor



SPECIFICATION



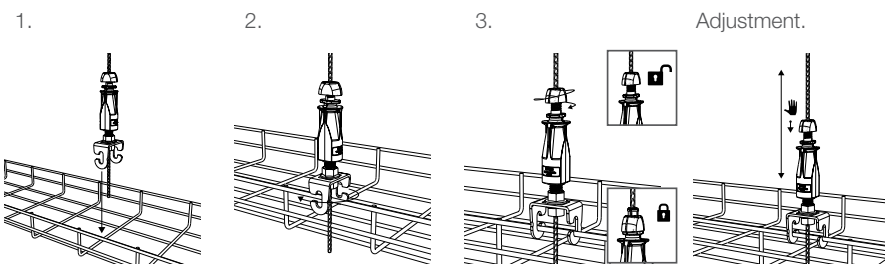
No. 2	Dimension	A	B	C	D	E
	mm	81	17	20	35	7

Foot Material	Thread – Mild Steel (Type EN1A) - Bright Zinc Plated Cable Basket Adaptor – Steel S450GD
---------------	---

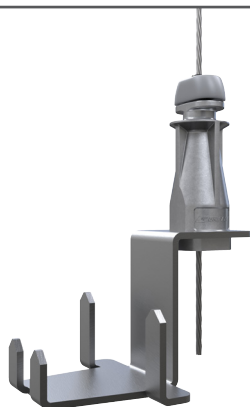
OVERVIEW

- Designed for fast suspension of cable baskets (up to 6 mm thickness)
- Eliminates requirement for channel bearers
- Central wire exit

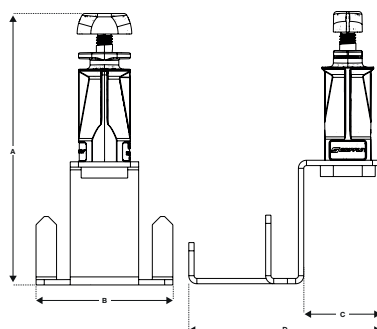
INSTALLATION



UniGrip – Phenolic Adaptor



SPECIFICATION



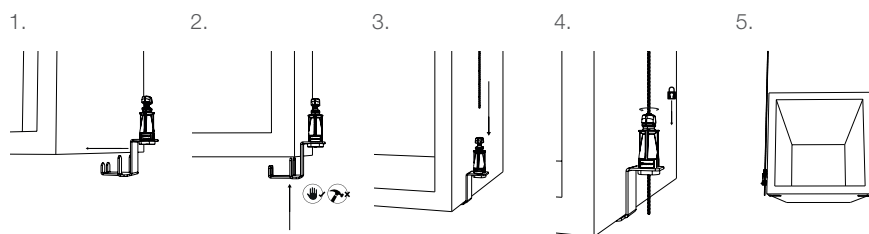
No. 2	Dimension	A	B	C	D
	mm	98	50	28	68

Foot Material	Hex Nut Bolt – Mild Steel (Type EN1A) - Bright Zinc Plated Adaptor Bracket – 2mm Galvanised Steel
---------------	--

OVERVIEW

- Ideal for Phenolic & PIR fabricated ductwork
- Fast, tool free insertion with less time at height
- Push-fit directly into the underside of the duct
- Use foil tape after insertion
- 15 kg per bracket @ 5:1 safety factor

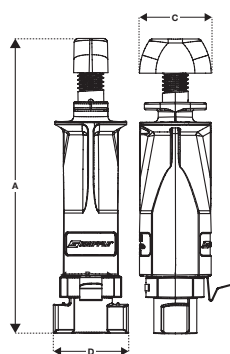
INSTALLATION



UniGrip – QTUB



SPECIFICATION



No. 2	Dimension	A	B	C	D
	mm	72.5	23	20	20

No. 3	Dimension	A	B	C	D
	mm	90.5	23	22	20

Foot Material	QTUB – Zinc Alloy (ZL2) Spring Clip – Stainless Spring Steel BS5770 301 S21
---------------	--

OVERVIEW

- Designed for use with GripplE Universal Bracket suspension slot
- Quarter turn installation, no mechanical fix required
- Safety clip for added security
- Central wire exit

INSTALLATION

